



Amber-Touch

The Amber-Touch is a fully programmable touch screen thermostat, designed to be used with electrical floor heating elements.

Allowing you to set 6 periods each day with corresponding pre-set temperatures, with a choice of either 'manual' or 'period control' mode. Equipped with energy saving functions such as sensor setup and frost protection mode to help reduce heating costs.

All Amber thermostats come with a 2 Year warranty.

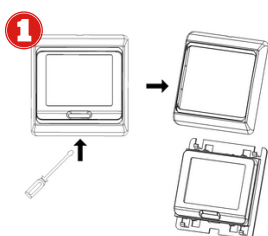
Benefits

- Touch screen operation
- 7 day, 6 period programme
- Sensor setup
- Frost protection mode
- Screen lock
- 2 Year Warranty

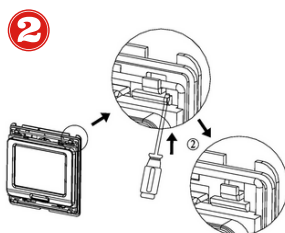
Technical Data

Supply voltage	230V
Power consumption	2W
Max current	16A
Housing material	Anti-flammable PC
Ambient temperature	-5°C - 50°C
IP class	IP20

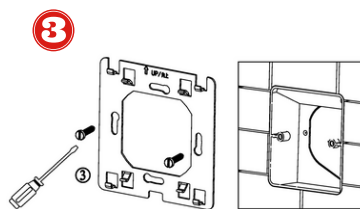
Wiring Information



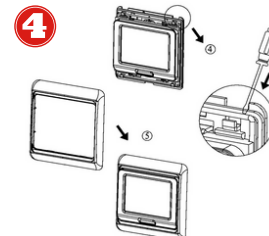
1 Release the front cover by inserting a screwdriver into bottom crack



2 Take the backing plate apart as shown above



3 Install the thermostat into the electrical connection box with screws



4 Install the housing cover and lock the external frame

Thermostat must be installed by a fully qualified electrician and all wiring must meet most recent wiring regulations.

Thermostat to be installed within a 47mm single-gang back box.

